

Cerebral Abscess

Joseph Junewick, MD FACR

02/16/2009

History

13 year old female with headache and mild constitutional symptoms.

Diagnosis

Right cerebral (parietal) abscess.

Discussion

Brain abscesses usually occur at the gray-white matter junction. The inner margin of the enhancing capsule is smooth whereas the outer margin is irregular and surrounded by edema. Diffusion is usually restricted. Spectroscopy demonstrates elevated amino acid and lactic acid peaks. Surgical drainage is necessary. Rupture of the abscess into the ventricular system portends a poor outcome.

Findings

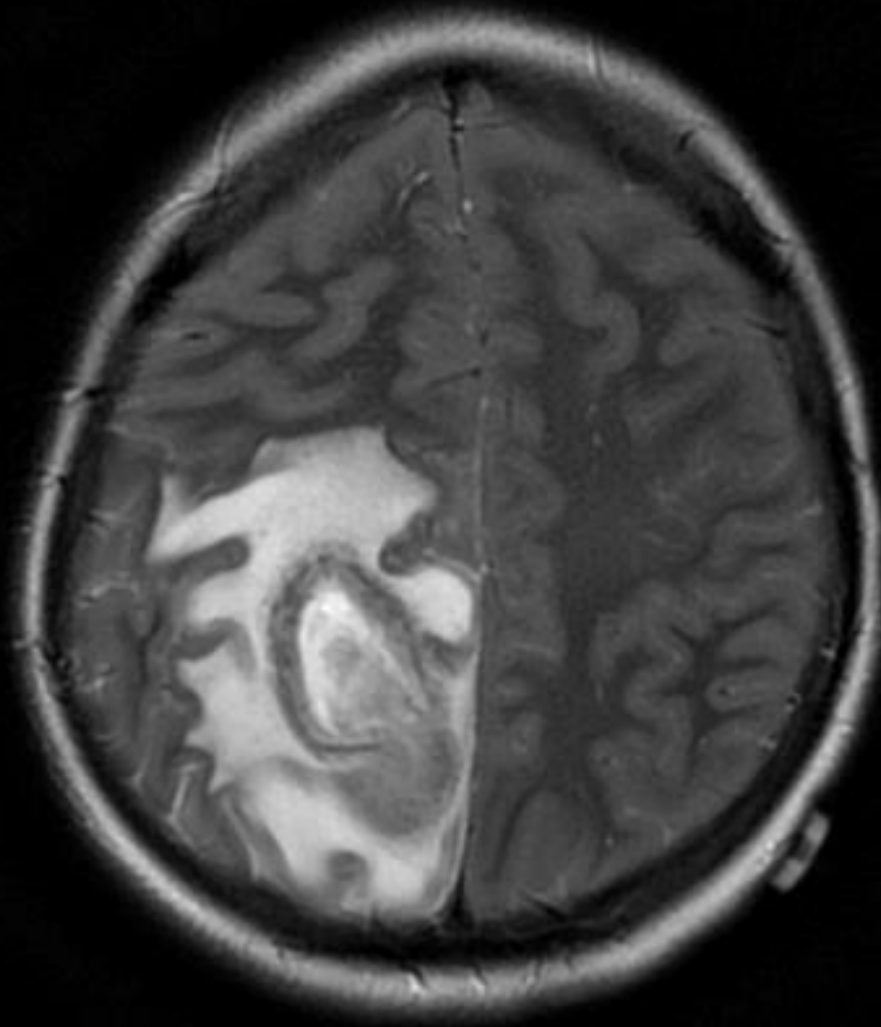
CT-Non-contrast axial image demonstrates a large right parietal mass with vasogenic edema.

MRI-Axial T2 image demonstrates a thick walled collection with vasogenic edema; sagittal post-gadolinium T1 image intense rim enhancement (the central border is sharp and the peripheral border is not).



Educational Use Only

SPECTRUM HEALTH





Educational Use Only

SPECTRUM HEALTH

Sponsored By



Disclaimer

This teaching site is partially funded by an educational grant from GE Healthcare and Advanced Radiology Services, PC. The material on this site is independently controlled by Advanced Radiology Services, PC, and GE Healthcare and Spectrum Health have no influence over the content of this site
Content Download Agreement

The cases and images on this website are owned by Spectrum Health. Permission is granted (for nonprofit educational purposes) to download and print materials to distribute for the purpose of facilitating the education of health professionals. The authors retain all rights to the material and users are requested to acknowledge the source of the material.

Site Disclaimer

This site is developed to reach healthcare professionals and medical students. Nothing this site should be considered medical advice.

Only your own doctor can help you make decisions about your medical care. If you have a specific medical question or are seeking medical care, please contact your physician.

The information in this website is provided for general medical education purposes only and is not meant to substitute for the independent medical judgment of a physician relative to diagnostic and treatment options of a specific medical condition.

The viewpoints expressed in these cases are those of the authors. They do not represent an endorsement. In no event will Advanced Radiology Associates, PC, Spectrum Health Hospitals (Helen DeVos Children's Hospital) or GE Healthcare be liable for any decision made or action taken in reliance upon the information provided through this website.