

Angiolymphatic Malformation

Joseph Junewick, MD FACR

07/24/2009

History

Right-sided neck mass.

Diagnosis

Angiolymphatic Malformation

Discussion

Lymphatic malformations in the head and neck result from maldevelopment of the cervical lymphatic system that arises as paired jugular lymph sacs sprouting from the primitive jugular venous plexus at 6 weeks gestation. Lymphatic malformations are classified as either macrocystic or microcystic; macrocystic lymphatic malformations are more common and are believed to arise from early sequestration of embryonic lymphatic channels. These lesions are frequently infiltrative. Lymphatic malformations are formed by multiple cystic spaces lined by endothelial cells separated by minimal stroma.

Findings

MR-Infiltrative cystic mass with mildly heterogeneous signal.

Reference

Meuley JY, Lepori D, Theumann N, et al. Multimodality Imaging valuation of the Pediatric Neck: Techniques and Spectrum of Findings. *RadioGraphics* (2005); 25: 931-948.

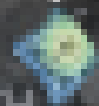


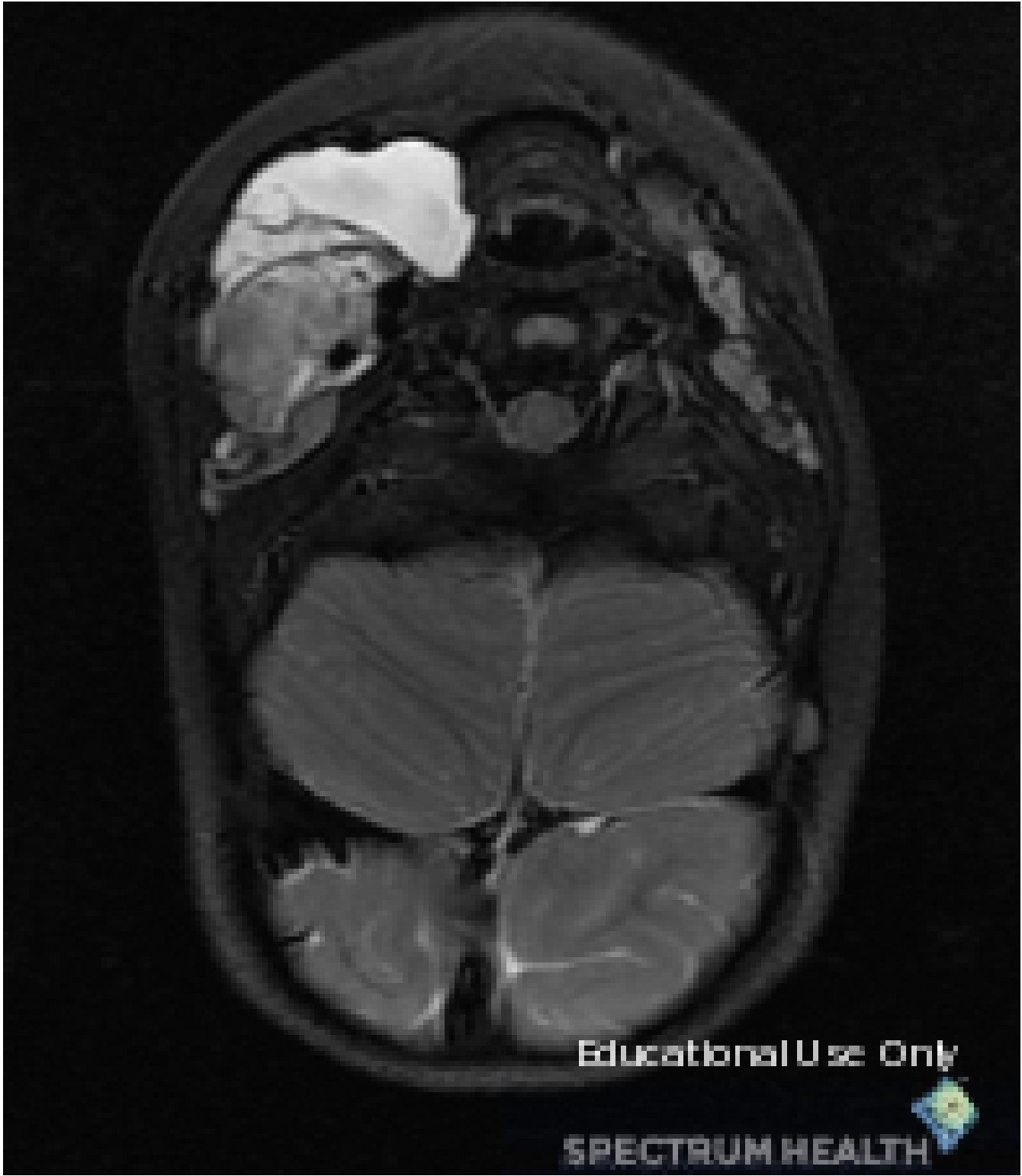
3A



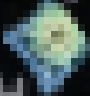
Educational Use Only

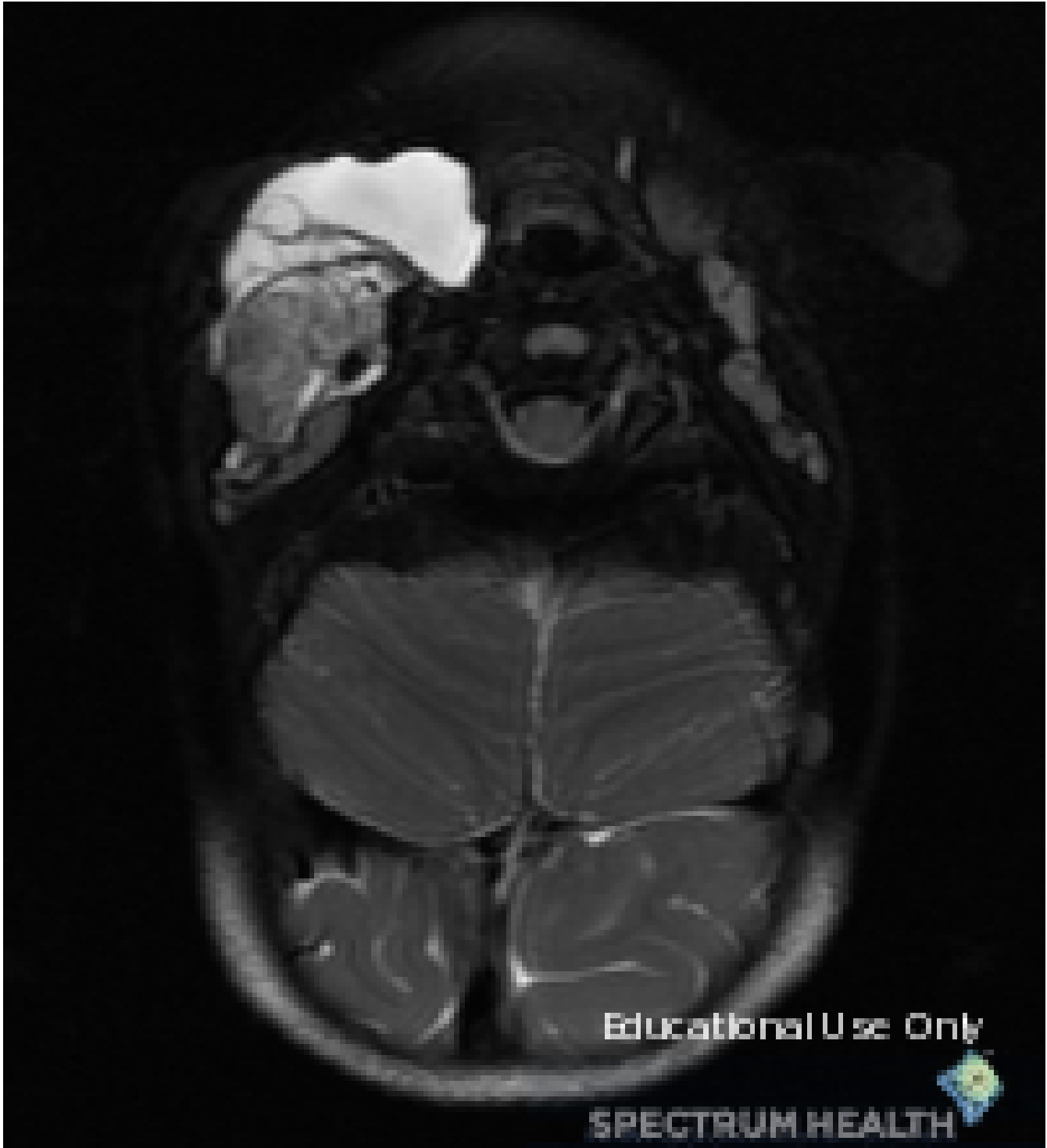
SPECTRUM HEALTH





Educational Use Only

SPECTRUM HEALTH 



Educational Use Only

SPECTRUM HEALTH





Educational Use Only

SPECTRUM HEALTH

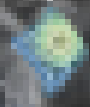


SA



Educational Use Only

SPECTRUM HEALTH



Sponsored By



Disclaimer

This teaching site is partially funded by an educational grant from GE Healthcare and Advanced Radiology Services, PC. The material on this site is independently controlled by Advanced Radiology Services, PC, and GE Healthcare and Spectrum Health have no influence over the content of this site
Content Download Agreement

The cases and images on this website are owned by Spectrum Health. Permission is granted (for nonprofit educational purposes) to download and print materials to distribute for the purpose of facilitating the education of health professionals. The authors retain all rights to the material and users are requested to acknowledge the source of the material.

Site Disclaimer

This site is developed to reach healthcare professionals and medical students. Nothing this site should be considered medical advice.

Only your own doctor can help you make decisions about your medical care. If you have a specific medical question or are seeking medical care, please contact your physician.

The information in this website is provided for general medical education purposes only and is not meant to substitute for the independent medical judgment of a physician relative to diagnostic and treatment options of a specific medical condition.

The viewpoints expressed in these cases are those of the authors. They do not represent an endorsement. In no event will Advanced Radiology Associates, PC, Spectrum Health Hospitals (Helen DeVos Children's Hospital) or GE Healthcare be liable for any decision made or action taken in reliance upon the information provided through this website.